

EMAS

EXECUTIVE MANAGEMENT ACCOUNTING SYSTEM

Financial and Distribution application solutions

PRODUCT OVERVIEW



INDEX

GENERAL INFORMATION

- ❖ Common Features..... Page 3
- ❖ Technical Information..... Page 3
- ❖ Product Objectives..... Page 3

MODULE HIGHLIGHTS

FINANCIAL MODULES:

- ❖ G/L General Ledger..... Page 4
- ❖ A/P Accounts Payable..... Page 5
- ❖ A/R Accounts Receivable..... Page 6
- ❖ F/A Fixed Assets..... Page 7

DISTRIBUTION AND INVENTORY MANAGEMENT MODULES:

- ❖ O/E Order Entry & Billing..... Page 8
- ❖ P/O Purchasing..... Page 9
- ❖ I/C Inventory Control..... Page 10

SYSTEM MANAGEMENT MODULES:

- ❖ S/C System Control..... Page 11

MOBILE WAREHOUSE SCANNING APPLICATION

- ❖ Purchase Order Receipt Scanning Application..... Page 12
- ❖ Sales Order Picking Scanning Application..... Page 12

MODULE FLOW OVERVIEWS

- ❖ EMAS Modules Overview..... Page 13
- ❖ Order Entry & Billing Flow..... Page 14
- ❖ Purchasing Flow..... Page 15
- ❖ Inventory Management Flow..... Page 16
- ❖ Accounts Receivable Flow..... Page 17
- ❖ Accounts Payable Flow..... Page 18

- GENERAL LEDGER ACCOUNT STRUCTURE..... Page 19**

- TYPICAL NETWORK COMPONENTS Page 20**

- WHY CHOOSE EMAS? Page 21**

COMMON FEATURES:

- ⊕ Integrated distribution and accounting system
- ⊕ User-Friendly, easy to use
- ⊕ Supports multi-company and multi-location environments
- ⊕ Supports multi-user and single-user environments
- ⊕ Comprehensive system security and traceability
- ⊕ On-line, real time update with field by field validation
- ⊕ Internal Electronic Mail
- ⊕ Can activate Calculator/Calendar on any screen and return result
- ⊕ User can execute multiple simultaneous EMAS sessions
- ⊕ Can activate "Search" key in any field to look-up valid entries
- ⊕ All reports can be displayed on screen for paperless system
- ⊕ All reports can be configured to run in automatic schedule and sent to designated email account(s)
- ⊕ All reports can be generated as PDF, XLS, DOC, HTML and TXT attachments
- ⊕ Totally integrated modules can be implemented independently
- ⊕ Fully mouse-driven

TECHNICAL INFORMATION:

- ⊕ Base language is Visual FoxPro 9.0
- ⊕ Runs under XP/Vista/ Windows 7/Windows 8 (32bit and 64bit)
- ⊕ Source code available
- ⊕ Custom tailoring, with local and remote support
- ⊕ Uses OLE automation for integration with Excel and Word

PRODUCT OBJECTIVES:

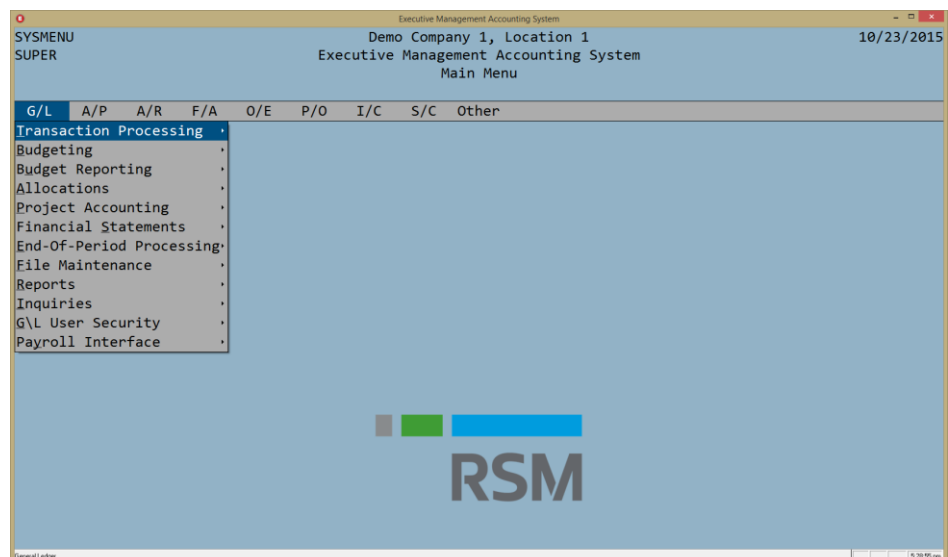
- ⊕ Provides a powerful, yet easy to use application with local technical support
- ⊕ Provides our clients a solution that can respond to their changing needs
- ⊕ Provides a product with which we can deliver the best possible service to our clients
- ⊕ **EMAS** is a proven solution for the following industries:
 - ✓ Distribution of any type of products, including,
 - lot-controlled goods
 - goods based on catch weight
 - goods requiring customer licenses that expire
 - hazardous materials
 - Serialized inventory
 - ✓ Concrete Industry
 - ✓ Propane Gas Industry, including a separate, fully integrated on-board truck application
 - ✓ Schools
 - ✓ Any company or entity requiring an integrated accounting system

EMAS GENERAL LEDGER

The EMAS General Ledger provides virtually unlimited financial reporting capabilities. It can manage a single company with one physical location, or handle multiple companies and multiple stores/plants/branches. All entries generated by other modules are automatically placed in the EMAS General Ledger. You can maintain multiple accounting periods open, so there are no hassles with month-end closes. The report writer that comes with the system can virtually handle any type of reporting requirement, allowing you to create your own financial reports. The company's controller can be sure that all accounting entries will be fully traceable.

GENERAL LEDGER HIGHLIGHTS

- ⊕ 12 or 13 accounting periods per fiscal year
- ⊕ Multiple open accounting periods and years
- ⊕ Flexible account structure with user-defined groups
- ⊕ Budgeting with up to 9 simultaneous budgets per year per company
- ⊕ Allocations - automatic distributions at month-end
- ⊕ Project Accounting
- ⊕ Recurring entries
- ⊕ Auto-reversing entries
- ⊕ Upload journal entries from Excel®
- ⊕ Trial Balance with optional output to Excel®
- ⊕ Enter/Edit/Post processing and control steps
- ⊕ Copy/Reverse prior entries
- ⊕ On-line Account activity and budget inquiry
- ⊕ Financial Report Generator for user-defined reports and spreadsheets
- ⊕ Single Company/Combined Financial Reports
- ⊕ Cost Center-level Security
- ⊕ Can be configured to work with entries from external modules such as a payroll application

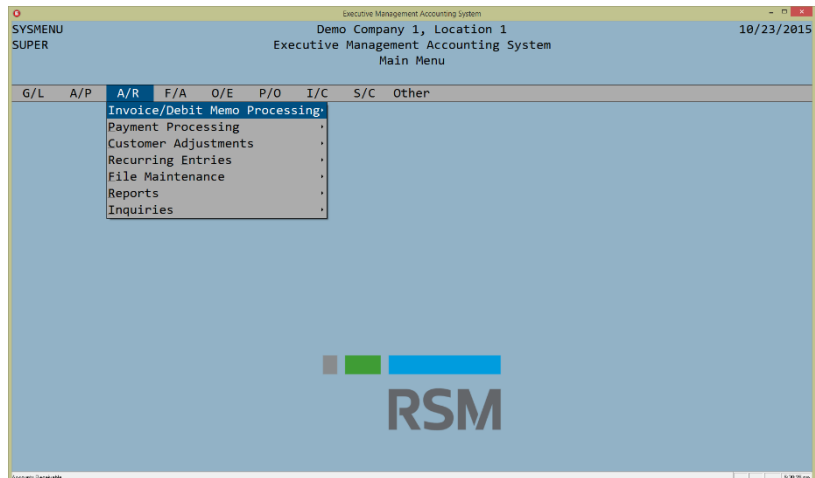


EMAS ACCOUNTS RECEIVABLE

The EMAS Accounts Receivable module provides the tools necessary to track and control receivables. The module manages customer Invoices, credit memos, recurring receivables, cash receipts, adjustments and discounts. Partial or full payments can be recorded against outstanding invoices. Open payments that can later be matched to invoices are also allowed. Following up on past due accounts is easy with EMAS A/R. On-line or printed aging as of any date, user-defined customer statements, automatic follow-up letters containing account information, and follow-up notes that can be recorded while you inquire customer information are some of the tools you have available. Other features include interaction of cash receipts with Bank Reconciliation, NSF checks that automatically reinstate invoices paid and a wide array of reports and on-line inquiries.

ACCOUNTS RECEIVABLE HIGHLIGHTS

- ⊕ Manual Invoice and Credit Memo entry
- ⊕ Recurring Invoices for rentals, school tuitions, etc.
- ⊕ Manages Customer Warranties
- ⊕ Multiple user-defined Invoice formats
- ⊕ Invoices can be automatically sent by EDI and/or e-mail
- ⊕ Payment Entry with A/P Bank Reconciliation interface
- ⊕ On-Line Customer Inquiry
- ⊕ Handles Open Payments
- ⊕ Apply Open Payments function
- ⊕ Adjustment Processing
- ⊕ Finance Charges generation
- ⊕ Cash receipt deposits with Inter-Company capability
- ⊕ Sales Journal and Cash Receipts Journal reports
- ⊕ Inter-Company customers
- ⊕ As of any date Aging Report with user-defined periods, including output to Excel®
- ⊕ User-defined Customer Letters and selection criteria with MS Word® automation
- ⊕ Multiple user-defined Customer Statements
- ⊕ Statements can be automatically sent by e-Mail
- ⊕ Integrated Address Book to store multiple customer contacts
- ⊕ Fully integrated to G/L and O/E

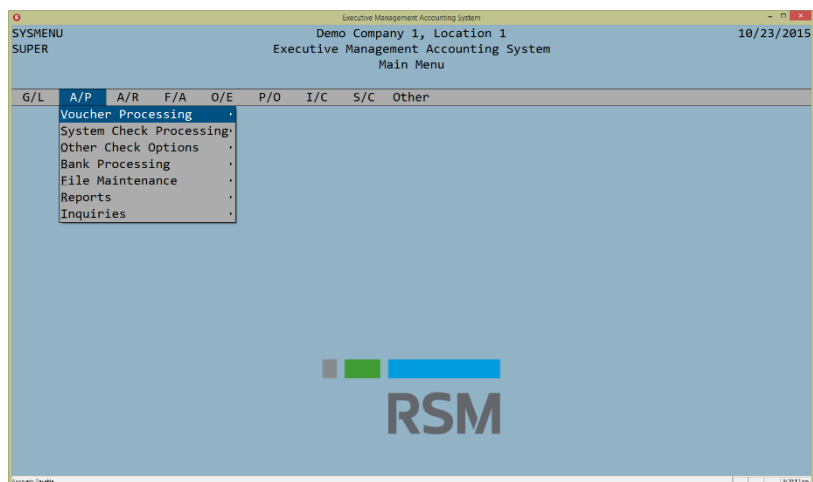


EMAS ACCOUNTS PAYABLE

The EMAS Accounts Payable module provides the tools necessary to track and control expenditures. The module manages invoices, credits and recurring payments. Partial or full payments can be recorded through system-generated or manual checks against outstanding invoices, recurring and miscellaneous payments. The elaborate payment process allows selection of invoices to be paid, printing of pre-check registers and confirmation of printed checks. Full bank reconciliation capabilities are also included.

ACCOUNTS PAYABLE HIGHLIGHTS

- ⊕ Vendor invoice and debit/credit memo processing
- ⊕ Full Electronic Bank Reconciliation
- ⊕ As of any date Aging Report with user-defined periods
- ⊕ 1-way, 2-way or 3-way invoice matching
- ⊕ Automatically distribute costs such as freight to purchase receipts for landed cost calculation
- ⊕ On-Line Vendor Inquiry
- ⊕ Duplicate Invoice Number detection, even if paid
- ⊕ Invoices with variance can be placed on hold for approval
- ⊕ Hold/Release invoices & credit memos, and hold vendor payments
- ⊕ Apply CR Memos directly to Invoices
- ⊕ Void posted invoices
- ⊕ Multiple user-defined check formats and multiple checking accounts
- ⊕ Wire Transfers and ACH Payments
- ⊕ Pre-Paid Invoices and checks
- ⊕ Check Reversals, reinstating invoices paid
- ⊕ Check Register with Missing Checks detection
- ⊕ Recurring payments
- ⊕ Puerto Rico 7% automatic Withholding processing
- ⊕ Year-end Tax Reports export to Hacienda's electronic system
- ⊕ Can track check mailing date and bank paid date for cash management and control
- ⊕ Integrated Address Book to store multiple vendor contacts
- ⊕ Fully integrated with G/L and P/O

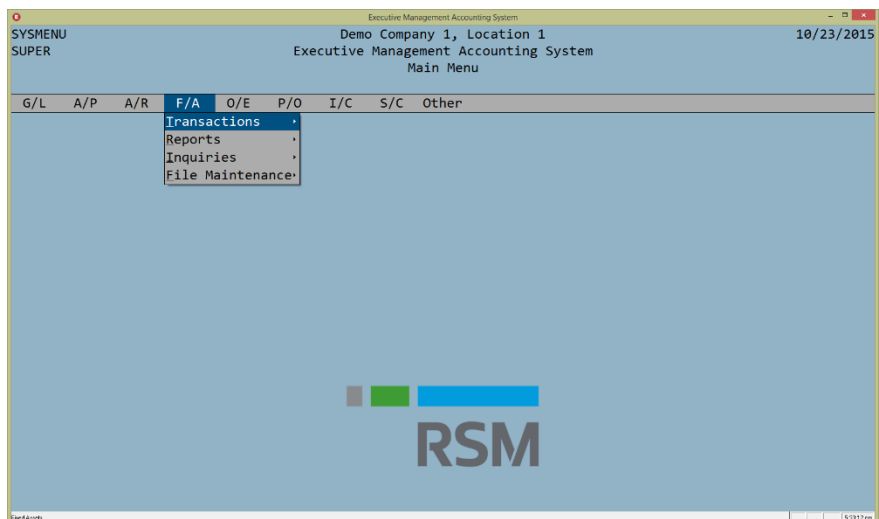


EMAS FIXED ASSETS

The EMAS Fixed Assets module is a flexible and powerful tool to manage and track your assets. It seamlessly integrates with the EMAS General Ledger module, allowing you to maintain your books up-to-date at all times. The EMAS Fixed Assets module allows you to record your assets by tag number and enter depreciation parameters. You can calculate, evaluate and post depreciation entries automatically each month. You can also enter manual depreciation entries, enter adjustments to book value, enter adjustments to depreciation and record services performed to assets and related costs.

FIXED ASSETS HIGHLIGHTS

- ⊕ Depreciating and non-depreciating asset ledger
- ⊕ Straight-line and days in accounting period depreciation methods
- ⊕ Manual and automatic depreciation entries with G/L interface
- ⊕ Record asset repair/service costs and track history
- ⊕ Record asset transfers/movements and track history
- ⊕ Record tax value adjustments
- ⊕ User-defined fields
- ⊕ Unlimited asset memo field
- ⊕ Relate assets with other assets
- ⊕ On-line asset activity history
- ⊕ Report Writer for user-defined reports
- ⊕ As-of-any-date asset value report
- ⊕ Asset Tax Report with municipal-based tax percents
- ⊕ Fully integrated to G/L and A/P

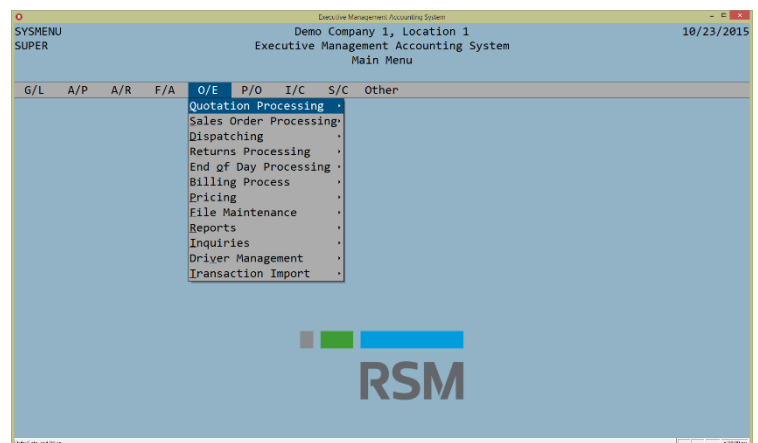


EMAS ORDER ENTRY & BILLING

The EMAS Order Entry & Billing module provides the tools necessary to manage a full distribution cycle. It supports inventory and non-inventory sales, quotations with automatic conversion to sales orders, sales order entry, dispatching, picking lists, sales returns, multiple pricing and volume discount schemes, user-defined sales reports, and many other features. The dispatching options support “walk-in” sales and truck deliveries with confirmation of goods delivered for accurate billing. Sales Returns to manage goods returned by customers are also supported. Salespersons can access the system remotely and work only with their accounts. The billing process allows the user to select deliveries and returns to be billed, generating invoices and credits to the A/R module. Other features include user-defined forms, a sales report generator and multiple inquiries and reports. Picking using hand-held devices is also supported.

ORDER ENTRY & BILLING HIGHLIGHTS

- ⊕ Sales Order placement with automatic inventory commitment
- ⊕ Multiple pricing schemes, volume discounts and date-sensitive special offers
- ⊕ Supports use of bar code scanners to pick/verify goods shipped
- ⊕ Credit Limit and Payment Terms verification
- ⊕ Request approval for held orders by email and receive approval acknowledgement by email
- ⊕ On-Line Credit Approval Request and On-Line Credit Approval, with email notifications
- ⊕ Supports Sales Kits
- ⊕ Back-Order report to track pending deliveries
- ⊕ Delivery Routes, Pick-Lists and delivery costs management
- ⊕ Delivery Confirmation - bill only what delivered
- ⊕ Pre-Billing and Post Billing options
- ⊕ Manages Municipal and State Sales Taxes, and Exemption Certificates that expire
- ⊕ Customer Returns processing
- ⊕ Commissions reporting with sales/payments calculations
- ⊕ Quotes with Automatic Convert to Sales Order
- ⊕ Multiple user-defined Dispatch Tickets, Sales Orders and Quotes
- ⊕ User-defined Licenses and Expiration Date verification
- ⊕ Multiple Shipping Locations - same customer number
- ⊕ Unlimited Shipping Instructions and Comments for Quotes/Sales Orders>Returns/Dispatches
- ⊕ Promotional (Non-Charge) units, Miscellaneous Charges and Non-Inventory Sales
- ⊕ User-configurable report generator for sales reports in any sequence
- ⊕ Fully integrated to G/L, A/R and I/C modules

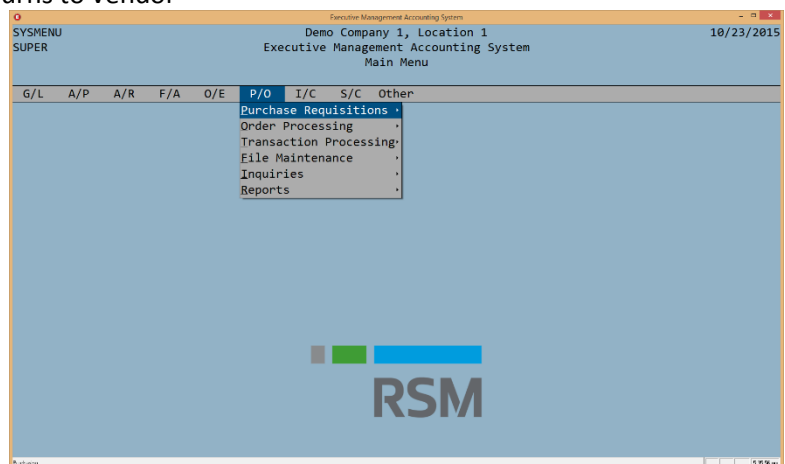


EMAS PURCHASING

The EMAS Purchasing module contains the necessary features to manage your complete purchasing cycle. It seamlessly integrates with the *Inventory Control* and *Accounts Payable* modules to provide extensive support to the Purchasing cycle; from suggesting inventory purchases, recording and receiving purchase orders, to passing Receiving Reports to A/P for invoice matching and eventual payment. The module manages requisitions and purchase orders for inventory, supplies and services. Purchase orders can be received in full with a function key. Unlimited partial receipts are also allowed. Purchase orders for vendors that provide services are "received" when you record invoices against the orders through the Accounts Payable module. Optional controls require purchase orders exceeding a pre-defined amount to be electronically approved before they can be printed or received. Other controls help detect and prevent over shipments. User-defined formats are available for purchase order, receiving report, return to vendor and PO receipt worksheet documents. A wide variety of reports and on-line inquiries are also available.

PURCHASING HIGHLIGHTS

- ⊕ Purchase Requisitions with unlimited line items and user-defined approval process
- ⊕ Order processing for inventory, supplies, and services
- ⊕ Unlimited purchase order line items and line item comments
- ⊕ Item prices with vendor cross-references
- ⊕ On-Line Vendor Inquiry
- ⊕ User-defined P.O. and Receiving document formats
- ⊕ Request approval for held orders by email and receive approval acknowledgement by email
- ⊕ Purchase Orders can be automatically sent by EDI and/or e-mail
- ⊕ Can print buyer's signature automatically
- ⊕ Can print approver's signature automatically
- ⊕ Orders over user-defined amount require approval
- ⊕ User-defined order approval levels
- ⊕ Automatic accruals - received not invoiced
- ⊕ 2-way or 3-way invoice matching with A/P module
- ⊕ User-defined Purchasing statistics reporting with optional output to Excel
- ⊕ Suggested purchases report based on reorder parameters and projected inventory levels
- ⊕ Purchase Order Tracking report to track pending receipts
- ⊕ Supports use of bar code scanners to receive goods
- ⊕ Partial receipts, receipt reversals & returns to vendor
- ⊕ G/L account security by user
- ⊕ Fully integrated with A/P, G/L and I/C

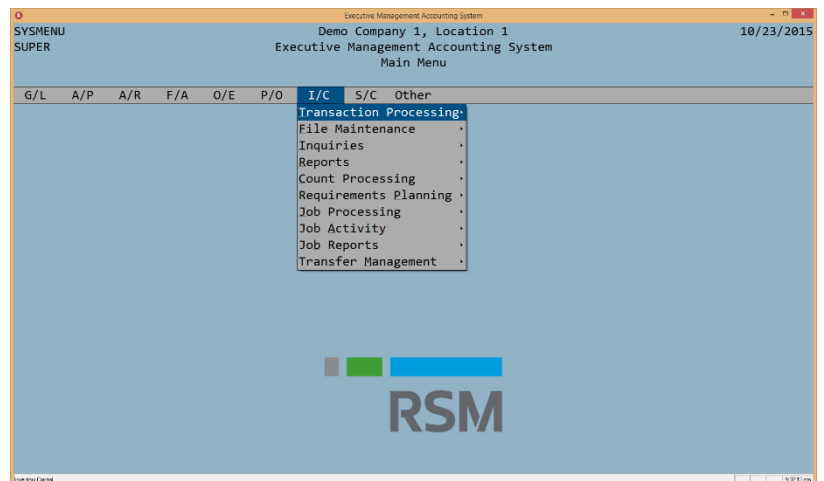


EMAS INVENTORY CONTROL

The EMAS Inventory Control module is the core of the EMAS Inventory Management modules. It seamlessly interfaces with the EMAS Purchasing and Order Entry & Billing modules to maintain and reconcile perpetual inventories by company, company location, warehouse, stock location and lot/serial number. Up to 4 user-defined QC status designations are also available. The module provides for inventory adjustments, cost adjustments, transfers, QC status changes, Cycle Counting and Job Costing. For manufacturing companies, the module also provides Bill of Materials, Demand Forecasting and a Material Requirements Planning (MRP) report. Other features include a wide array of reports and inquiries to reconcile inventory information.

INVENTORY CONTROL HIGHLIGHTS

- ⊕ Inventory and non-inventory items
- ⊕ Maintains perpetual inventory with full audit traceability
- ⊕ Moving Average and Standard cost methods
- ⊕ 0 to 3 decimals for Qty fields, defined per item
- ⊕ 2 to 5 decimals for unit costs, defined per item
- ⊕ 2 to 5 decimals for selling prices, defined per item
- ⊕ Inventory Adjustments, Stock Transfers and QC Status Transfers
- ⊕ "One-Step" Production Entry with components issued
- ⊕ Cycle Counting and Physical Counting with Variance Report
- ⊕ Supports use of bar code scanners for physical inventory process
- ⊕ Lot control and lot tracking
- ⊕ Serialized Inventory
- ⊕ Job Costing with WIP tracking, Production Schedule and invoicing
- ⊕ Work Orders to customers and internal
- ⊕ Multiple Warehouses and Warehouse-level Security
- ⊕ Multiple Storage (bin) locations
- ⊕ Supports up to 4 QC Status designations
- ⊕ Supports Hazardous Materials and DOT reporting
- ⊕ Inventory Exceptions Report
- ⊕ On-line Item Inquiry with Inventory Reconciliation
- ⊕ As-of-any-date inventory status report
- ⊕ Multiple user-defined fields
- ⊕ Fully integrated with G/L, O/E and P/O

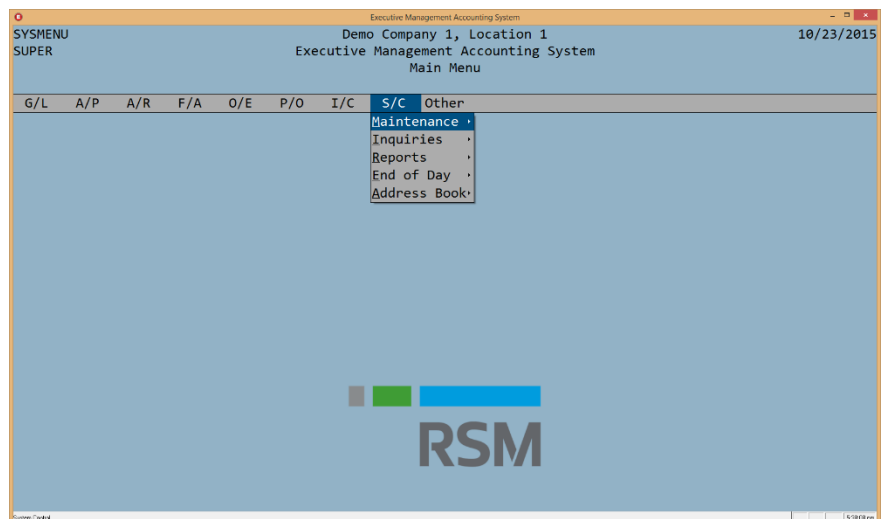


EMAS SYSTEM CONTROL

The EMAS System Control module manages key elements of your system. These elements include your users, printers, workstations, programs, system security and files. Most of the functions available in this module are intended for the "System Supervisor", or any person you have designated to be in charge of data processing operations. Through this module, the Supervisor defines users, the functions they are authorized to perform and the companies they are authorized to work with. The Supervisor can also define and configure the printers attached to your system so that users can send reports to them. These and other system control parameters are monitored through the System Control module.

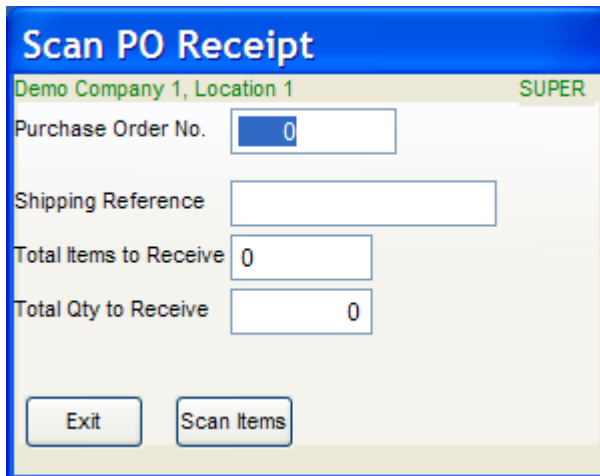
SYSTEM CONTROL HIGHLIGHTS

- ⊕ User Login
- ⊕ Define users and menu security
- ⊕ User Security models (roles)
- ⊕ Establish access to options and company/locations
- ⊕ Establish number of sessions a user can have
- ⊕ Configuration of printers and queues
- ⊕ Configuration of workstations
- ⊕ Can capture user signatures to include in forms
- ⊕ User Status Inquiry
- ⊕ Can track what options particular users have been accessing
- ⊕ Full traceability of security scheme for audit purposes
- ⊕ Address Book to store companies and contacts, and print mailing lists
- ⊕ Menu Access Control
- ⊕ Internal E-Mail system
- ⊕ Configuration of SMTP to send emails from EMAS to customers, vendors and salespersons
- ⊕ Print Management
- ⊕ All reports can be viewed on screen, printed, faxed, generated as pdf documents and more
- ⊕ Dedicated EMAS Batch Jobs Scheduler can execute reports, interfaces, alerts, backups and other tasks independent from users and at designated days and times.



EMAS MOBILE WAREHOUSE SCANNING APPLICATION

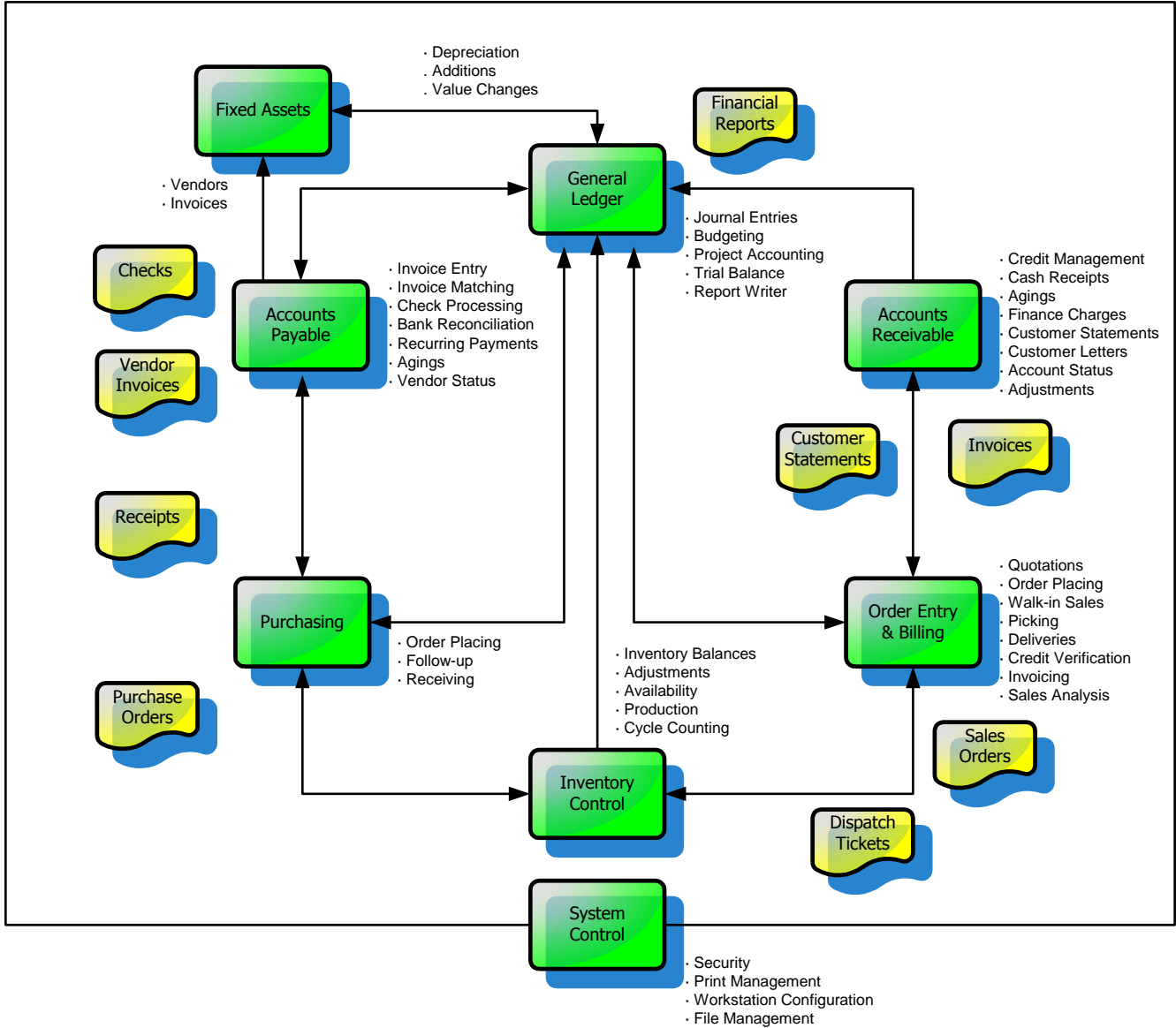
The EMAS Mobile Warehouse Scanning Application is designed to run on Windows-CE based hand held devices. It is an optional application that allows you to record purchase receipts and perform picking for sales orders by using a bar-code scanner. It is totally integrated with EMAS, therefore not requiring any interfaces. Whatever transactions you make in the mobile application are instantly recorded in the EMAS database.



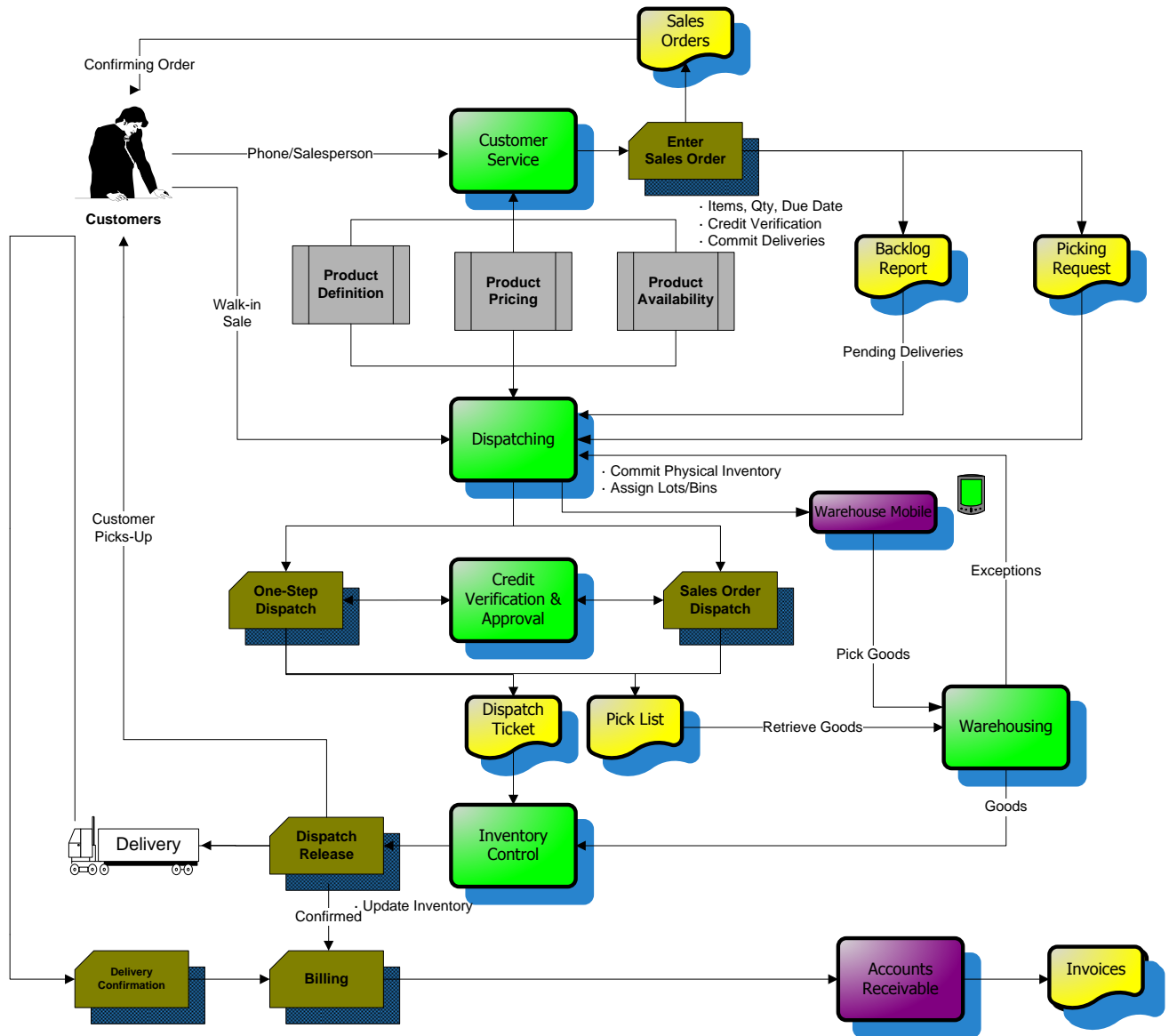
The PO Receipt scanning application allows you to scan the items received, enter quantity, lot and/or bin information. Upon completing the receipt of all items received, a Purchase Order Receiving Report is generated.

The Sales Order Dispatch scanning application allows you to scan the items to pick, and enter quantity, lot and/or bin picking information. Upon completing the picking of all items ordered, a Picking Verification List is generated so that inventory retrieved can be verified before shipping.

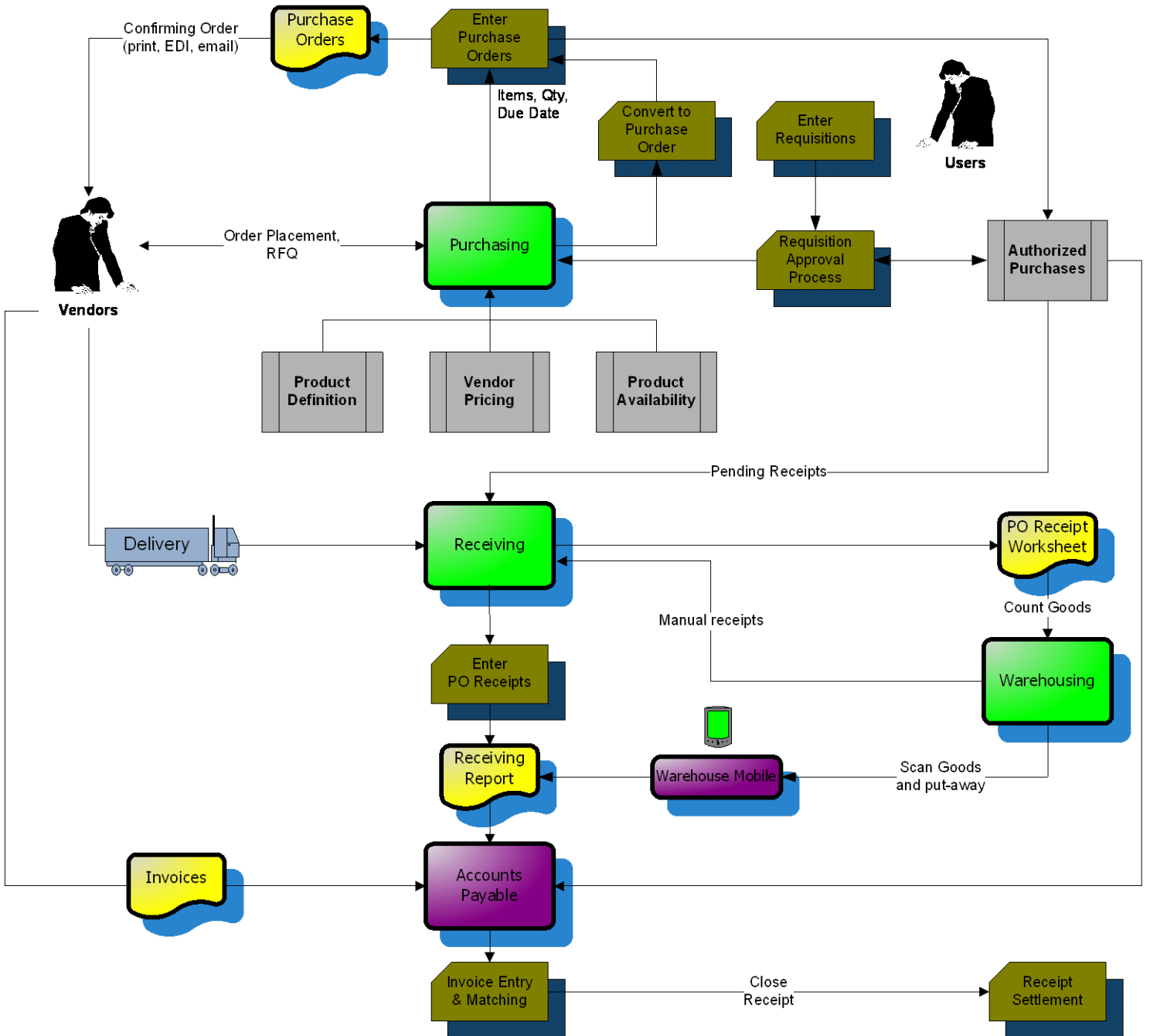
MODULES OVERVIEW



ORDER ENTRY & BILLING OVERVIEW



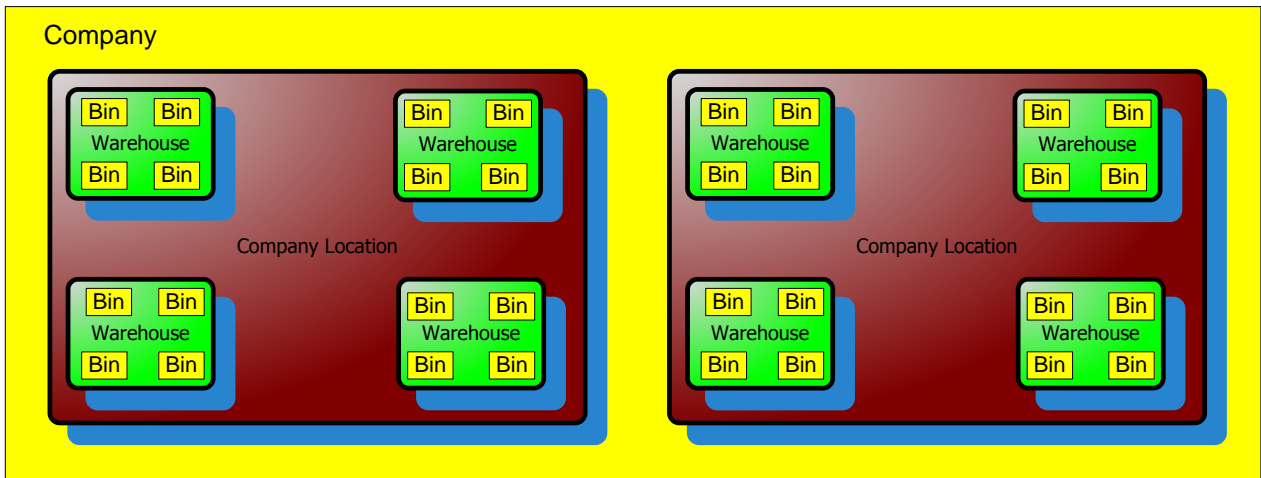
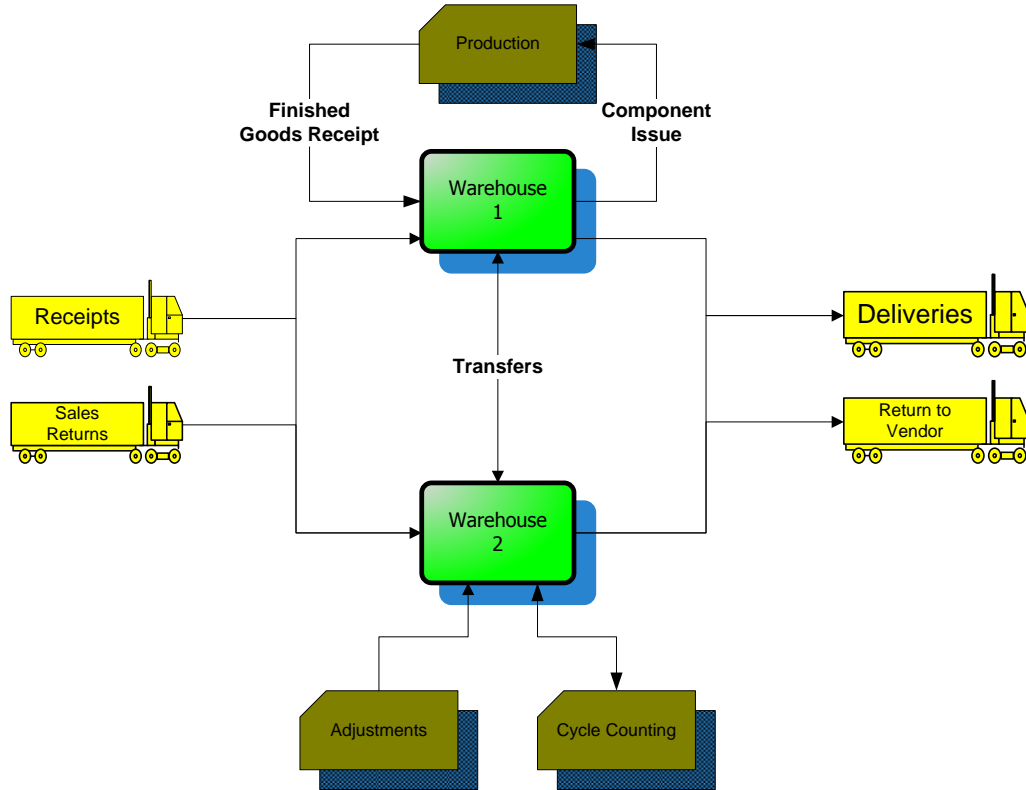
PURCHASING OVERVIEW



INVENTORY MANAGEMENT OVERVIEW

Increase Inventory

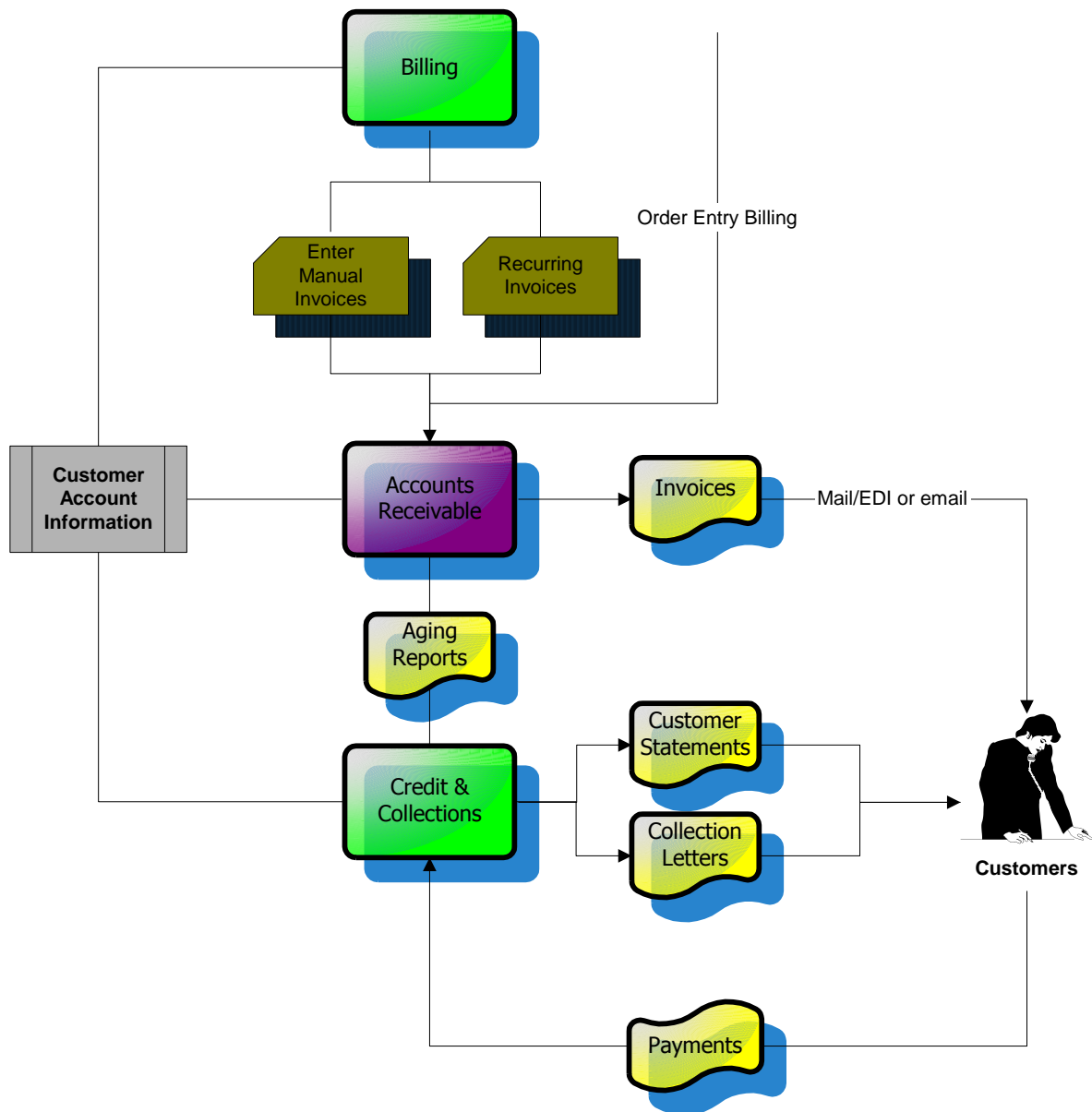
Decrease Inventory



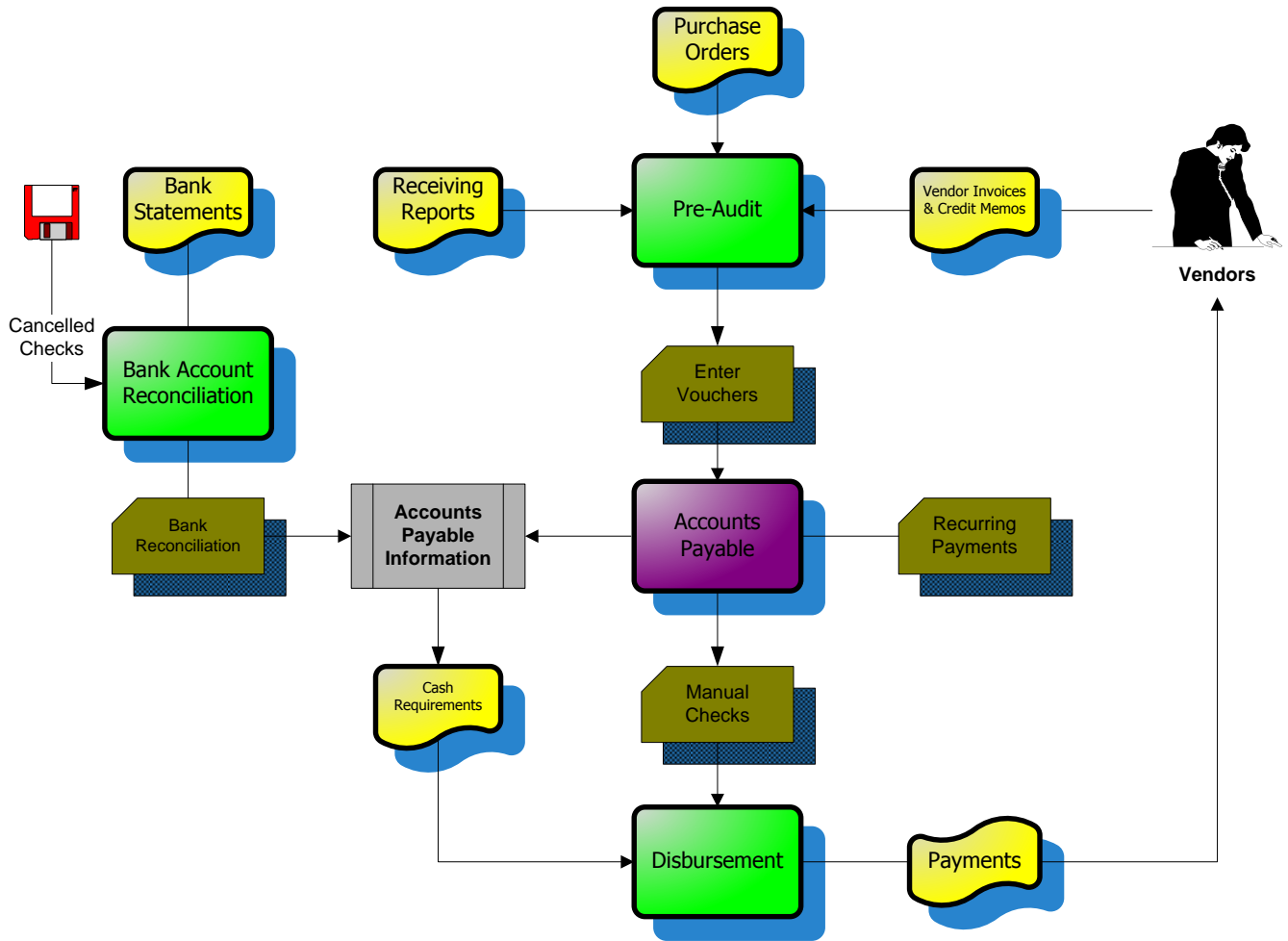
Inventory Tracking Levels for any item:

- Level 1 - Company Location (default)
- Level 2 - Warehouse/Bin
- Level 3 - Lot Number (with Expiration Date) or Serial Number

ACCOUNTS RECEIVABLE OVERVIEW

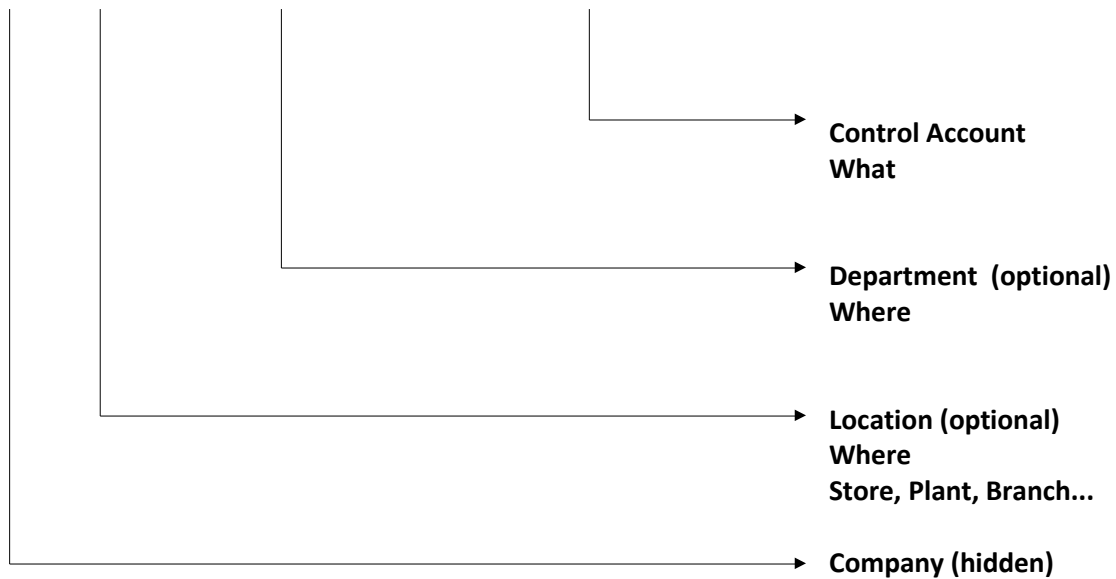


ACCOUNTS PAYABLE OVERVIEW



G/L ACCOUNT STRUCTURE

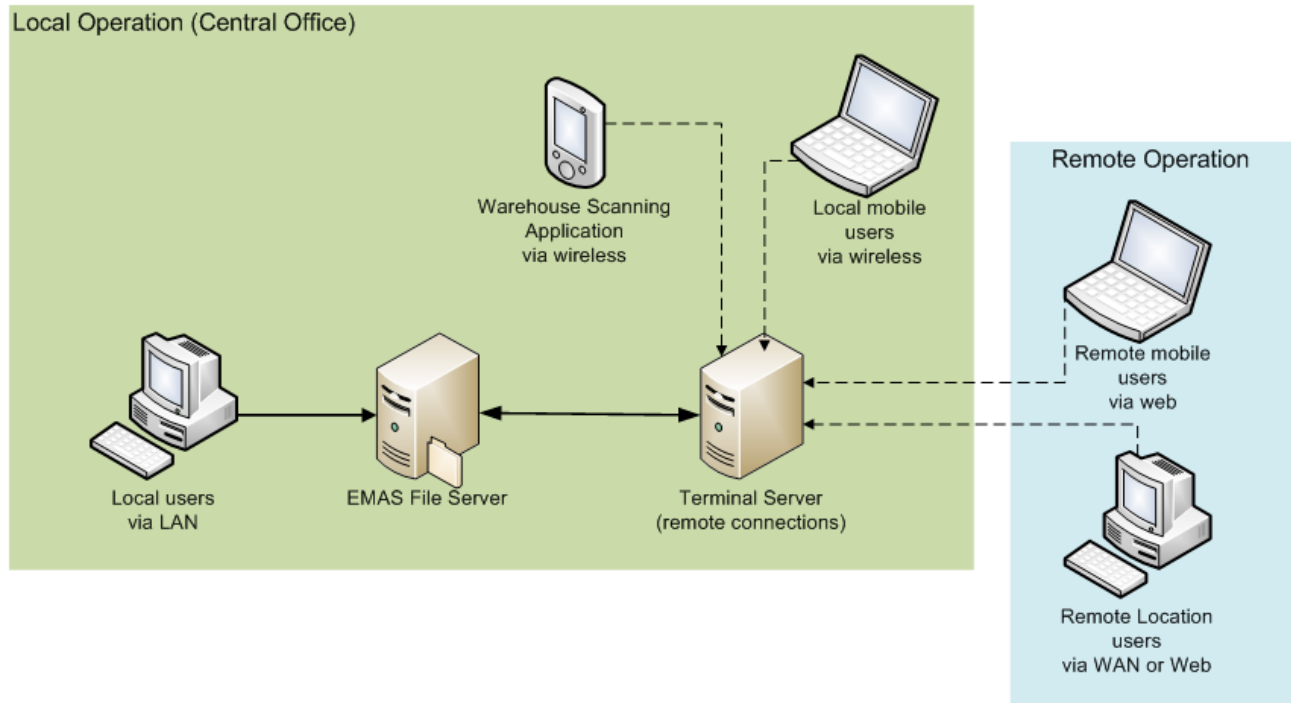
C-L-DDD-AAAAA



- ✓ All account segments are alpha-numeric
- ✓ Location (branch, store, etc.) can be configured from 1 to 3 positions
- ✓ P/L by Company, Location, Department or any possible combination
- ✓ B/S by Company

TYPICAL NETWORK COMPONENTS

EMAS requires at a minimum a Local Area Network through which users connect to the application. For remote users, or for use of the Warehouse Scanning Application, a Terminal Server or Citrix server is required.



WHY CHOOSE EMAS?

Long Term Solution - Clients that have implemented EMAS in the last 25 years, with very few exceptions, still use the system. So EMAS is a long-term solution for the majority of our clients. Companies that have replaced it with a new solution did it at an average cost that exceeds 5 times what it cost them to implement EMAS, and the majority of their users have expressed dissatisfaction with their new system, even one year after the change. This is a tribute to how easy to use and effective EMAS is, and how more expensive systems are not necessarily a better fit.

The Power to be Understood® - We work closely with our clients at all times to understand their needs and support them. Of course the requirements of our clients have changed during the last 25 years, but EMAS has also evolved to address their changing needs. Because of the functionality and reliability of the system, our in-depth business and technical knowledge, and local support, clients feel comfortable using EMAS as their mission-critical application. We give dedication to all our clients as if each was our only client. Our primary focus is not to deliver a software product, but to implement a solution that sustains our client.

Great Functionality at an Affordable Price – EMAS is a product conceived and developed by our Business and Technology Consulting group that recommends and implements solutions from different software vendors for our clients. We have implemented most software products and are aware of their strengths and weaknesses. This experience has allowed us to develop and grow a product that is highly functional, while keeping its acquisition cost well below other typical products in the market. Again, we focus on the needs of our client, not on selling them a generic software license. EMAS is licensed as an annual maintenance fee, regardless of the number of users. Expect the price for using EMAS to be about what you would pay for 4 or 5 user licenses of other known software products. Our price includes annual updates, installed on your server, with no need to re-do custom modifications. With typical software products, their annual maintenance cost only gives you access to newer versions. Installation costs are not included, and any customized changes have to be re-programmed at an additional cost.

Does EMAS fit your Organization? – EMAS implementations have ranged from as little as 3 users, to over 70. It is a scalable product. Like stated earlier, we recommend and implement solutions from different software vendors. Our success relies on our ability to understand a client's needs, identifying the best solution given the requirements and constraints, and effectively implementing the solution. EMAS is a potential alternative, but in the end your requirements and constraints should dictate the solution, not the other way around. These are the characteristics of some of our clients, where EMAS is the primary or only software used to support the operation, and where some do not have a full-time in-house IT person:

- Propane Gas Distributor with over 20 plants, each representing a POS. All EMAS modules installed. Interfaces to bobtail trucks to schedule their routes and collect delivery and sales information. Work orders for installation services and maintenance. Over 25 users.
- Distributor of paper and graphic printing products, with salesforce using tablets and laptops to record sales from the field. Over 15 users. Using EMAS for financials and distribution. Automatic sales, aging and backorder reports to salesforce team.
- Manufacturer and distributor of paints, sealers and concrete products, and distributor of hardware products, with salesforce using tablets and laptops to record sales from the field. Multiple companies run MRP and EDI. Automatic reports to salesforce team. Over 20 users. All EMAS modules installed.

- Maintenance and repair shop for industrial motors and pumps, and distributor of engines. Job costing and invoicing. Over 10 users.
- Elementary and High School organization, using EMAS as their financial system, including monthly tuition billing and front office cashiers. 5 users.
- Restaurant chains with multiple locations, using EMAS as their financial system. Interfaces to restaurants POS systems to collect sales information. Over 5 users.
- Manufacturer and distributor of animal feed. Over 5 users.
- Non-profit organization using EMAS as their financial system to manage funds. 3 users.
- Supermarket chain, with over 35 stores and a central warehouse. All EMAS modules installed. Over 60 users. Used EMAS to manage their financials and orders between the stores and the central warehouse. Replaced EMAS with Oracle Financials. No longer in business.
- Pharmaceutical manufacturer used EMAS to manage their financials and finished goods distribution. Over 60 users. Replacing EMAS with corporate-wide SAP.
- CPA and Consulting firm, using EMAS as their financial system. Over 10 users.
- PBM company, using EMAS as their financial system. Over 5 users.
- Hardware products and paints distributor, using another company as warehouse and distribution entity. Salesforce using EMAS to record orders from the field. Interfaces to pass orders to distribution company and receive deliveries for invoicing. Over 5 users.
- Aggregates company with multiple plants using EMAS for all their distribution and financial needs. Over 10 users.

If you are interested in knowing more about the product or how it has helped other companies, or want to see a demonstration, please feel free to contact us.