

Anna

One of the
RSM team



A PARTNER IN THE LIFE OF YOUR COMPANY

Setting up a company is an exciting adventure, but it requires careful preparation to ensure success from the outset. At RSM, we are committed to being by your side right from the start of your entrepreneurial adventure and every step of the way.

Our service offering for your company is divided into three phases:

1. Before

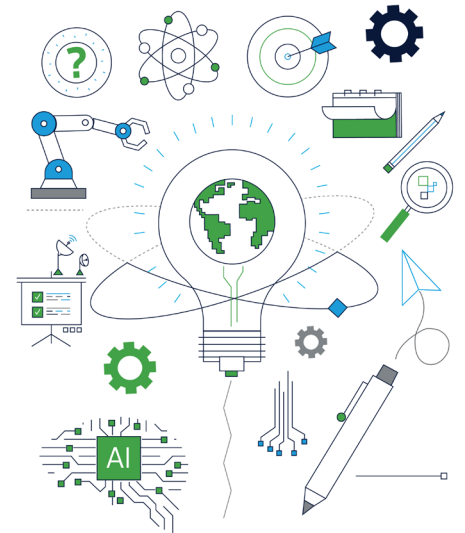
- Assistance in choosing the optimum legal form for your company.
- Advice on determining the ideal location for your company.
- Drafting and creation of tailor-made articles of association.
- Structuring investments to ensure efficient financial management.
- Full support in opening a compliant deposit account.
- Preparation and management of the company registration process.

2. During

- Legal and tax support throughout the business.
- Audit services to ensure compliance and transparency of operations.
- Customised financing options to meet the specific needs of your business.

3. After

- Support and advice to facilitate the transfer of your business.
- Assistance in the process of reselling the company, with a strategic approach to maximising value.
- Professional management of the liquidation of the company, ensuring an efficient and compliant closure.



At RSM, our commitment is to support you at every stage of your entrepreneurial journey, providing tailor-made solutions to ensure the success and longevity of your business.

CONTACT US!

Scan this QR code and Contact us directly on our website



RSM | 6TH LARGEST ASSURANCE, TAX & CONSULTING NETWORK WORLDWIDE

120 countries connected, a consistent execution

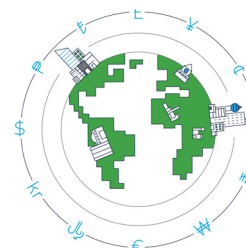
Whichever the country in which you operate may be, you have access to the whole RSM network. Our teams commit to the consistent quality of their projects in order to bring trust and security into your operations.

A unique contact point

We know that your time is precious. Your unique contact point at a high level is the relay of your needs at the heart of the network. It can make exchanges flow more smoothly, mobilise the local or international skills necessary whatever the destination of your ambitions may be.

A large range of skills

Together, we make our best skills, expertise and our sectorial knowledge available to you in order to help you reach your objectives. This expertise can help you enhance your business efficiency, reduce costs, control risks and become more competitive.



65,000+
People worldwide

900
Offices

120
Countries

OUR SERVICES

Accounting & Payroll

- Accounting
- Reporting set-up
- Salaries
- Invoicing
- Expatriates
- Secondment of personnel
- Back office management

Audit & Assurance

- Statutory and voluntary audits
- Donor and project audits
- Special and legislative audits
- Regulatory and AML audits
- Equal Pay Certification
- Internal audits

Consulting

- Strategy
- Commercial
- Restructuring
- Risk analysis and consulting

Corporate Finance & Deal Advisory

- Transaction advice
- M&A
- Due diligence
- Fundraising
- MBO / MBI

IT & Risk Advisory

- IT audit
- IT risk
- IT security & privacy
- Data analytics
- Business risk
- Digital transformation
- Green IT

Tax, Legal & GES

- Corporate & Real estate tax
- Private client services
- International tax
- VAT
- Crypto taxation
- Transfer pricing and M&A advisory
- Mobile workforce compliance & advisory
- HR solutions & advisory

Valuation & Transfer Pricing

- Business valuations
- Transfer pricing
- Functional analysis
- Documentation
- BEPS